

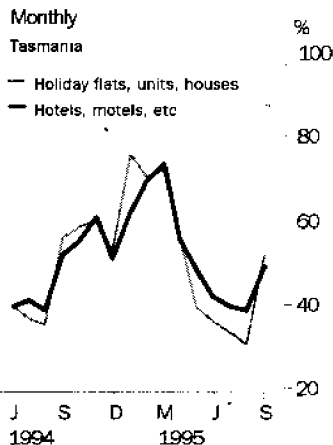
TOURIST ACCOMMODATION

TASMANIA

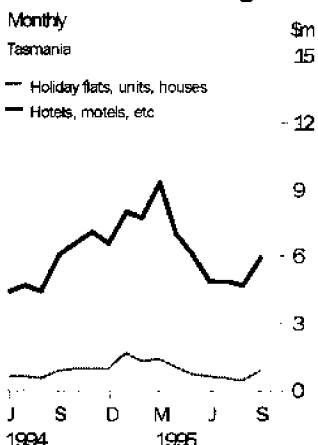
EMBARGOED UNTIL 11:30AM WED 20 DECEMBER 1995

SEPTEMBER QTR KEY FIGURES

Occupancy rates



Accommodation takings



	Sep 94	Sep 95	change
Hotels, Motels and Guest Houses			
Rooms available (No.)	5 316	5 452	2.6 %
Room occupancy rate (%)	43.5	42.1	-1.4 pts
Takings from accommodation (\$'000)	15 229	15 501	1.8 %
Holiday Flats, Units and Houses			
Units, etc. available (No.)	804	821	2.1 %
Unit occupancy rate (%)	42.5	38.3	-4.2 pts
Takings from accommodation (\$'000)	2 044	1 933	-5.4 %
Caravan Parks			
Sites, cabins, etc. available (No.)	6 924	6 417	-7.3 %
Site occupancy rate (%)	25.8	27.7	1.9 pts
Takings from accommodation (\$'000)	1 036	1 111	7.2 %
Visitor Hostels			
Bed spaces available (No.)	1 712	1 770	3.4 %
Bed occupancy rate (%)	8.0	8.1	0.1 pts
Takings from accommodation (\$'000)	145	158	9.0 %

SEPTEMBER QTR KEY POINTS

HOTELS, MOTELS AND GUEST HOUSES

- Capacity available increased over the year to September 1995 by 2.6% to 5,452 rooms, but demand measured by room nights occupied fell marginally by 0.6% resulting in a 1.4 percentage point fall in the quarterly occupancy rates.
- However, takings from accommodation increased by 1.8% to \$15.5m and average takings per room night occupied increased slightly from \$72 to \$73.

HOLIDAY FLATS, UNITS AND HOUSES

- Compared with September quarter 1994, capacity available in September quarter 1995 increased by 2.1%. However, unit nights occupied decreased by a substantial 8% leading to a fall in the quarterly unit occupancy rate from 42.5% to 38.3%.
- Takings from accommodation also decreased, falling by 5.4% to \$1.9m, although average takings per unit night occupied rose from \$65 to \$67.

CARAVAN PARKS

- Capacity decreased by a substantial 7.3% to 6,417 sites, cabins etc. while site nights occupied decreased by 1.3% compared with September quarter 1994. The result was a rise in the site occupancy rate from 25.8% to 27.7%.
- Accommodation takings increased by 7.2% from \$1.0m to \$1.1m.

INQUIRIES

- For further information about these and related statistics, contact Richard Bellichambers on 07 3222 6152, or any ABS Office.

NOTES

FORTHCOMING ISSUES

ISSUE (Quarter)

EXPECTED RELEASE DATE

December 1995

20 March 1996

.....

CHANGES IN THIS ISSUE

There are no changes in this issue.

.....

Denis W. Rogers

Acting Deputy Commonwealth Statistician

TABLE 1 — SUMMARY OF HOTELS, MOTELS AND GUEST HOUSES WITH FACILITIES, TASMANIA

Particulars	Unit	Quarter ended				Year ended			
		June 1994	September 1994	December 1994	March 1995	June 1995	September 1995	September 1994	September 1995
LICENSED HOTELS WITH FACILITIES									
Establishments	No.	91	91	92	91	92	92
Guest rooms	No.	3,488	3,513	3,526	3,511	3,545	3,566
Bed spaces	No.	9,961	9,856	9,921	9,908	9,932	9,946
Employment (persons)	No.	3,468	3,474	3,576	3,500	3,403	3,445
Room nights occupied	No.	163,803	145,246	177,580	209,797	157,516	140,180	690,608	685,073
Room occupancy rate	per cent	51.6	45.0	54.9	66.4	48.8	42.7	54.1	53.1
Guest nights	No.	263,797	239,577	302,266	367,621	261,030	228,065	1,164,916	1,158,982
Bed occupancy rate	per cent	29.1	26.4	33.2	41.2	28.9	24.9	32.0	32.0
Guest arrivals	No.	143,788	125,155	170,077	204,917	139,779	120,236	629,446	635,009
Average length of stay	days	1.8	1.9	1.8	1.8	1.9	1.9	1.9	1.8
Takings from accommodation	\$'000	12,660	11,109	14,188	16,898	12,719	11,026	52,904	54,831
MOTELS AND GUEST HOUSES WITH FACILITIES									
Establishments	No.	86	83	85	86	87	87
Guest rooms	No.	1,834	1,803	1,828	1,869	1,863	1,886
Bed spaces	No.	5,617	5,550	5,674	5,780	5,767	5,781
Employment (persons)	No.	751	747	815	856	749	777
Room nights occupied	No.	83,937	67,209	94,786	120,509	80,573	70,947	353,033	366,815
Room occupancy rate	per cent	50.4	40.6	56.4	71.6	47.6	40.9	52.9	54.0
Guest nights	No.	152,442	122,573	175,667	235,646	148,175	130,033	653,791	689,521
Bed occupancy rate	per cent	29.9	24.0	33.7	45.3	28.3	24.5	31.9	32.9
Guest arrivals	No.	86,979	69,307	105,336	135,180	89,147	74,128	369,054	403,791
Average length of stay	days	1.8	1.8	1.7	1.7	1.7	1.8	1.8	1.7
Takings from accommodation	\$'000	5,139	4,120	5,971	8,064	5,235	4,475	21,596	23,746
TOTAL HOTELS, MOTELS AND GUEST HOUSES WITH FACILITIES									
Establishments	No.	177	174	177	177	179	179
Guest rooms	No.	5,322	5,316	5,354	5,380	5,408	5,452
Bed spaces	No.	15,578	15,406	15,595	15,688	15,699	15,727
Employment (persons)	No.	4,219	4,221	4,391	4,356	4,152	4,222
Room nights occupied	No.	247,740	212,455	272,366	330,306	238,089	211,127	1,043,641	1,051,888
Room occupancy rate	per cent	51.2	43.5	55.4	68.2	48.4	42.1	53.7	53.4
Guest nights	No.	416,239	362,150	477,933	603,267	409,205	358,098	1,818,707	1,848,503
Bed occupancy rate	per cent	29.4	25.6	33.3	42.7	28.7	24.8	32.0	32.3
Guest arrivals	No.	230,767	194,462	275,413	340,097	228,926	194,364	998,500	1,038,800
Average length of stay	days	1.8	1.9	1.7	1.8	1.8	1.8	1.8	1.8
Takings from accommodation	\$'000	17,799	15,229	20,159	24,963	17,954	15,501	74,500	78,577

TABLE 2 — SUMMARY OF CARAVAN PARKS, TASMANIA

Particulars	Unit	Quarter ended				Year ended			
		June	September	December	March	June	September	September	September
		1994	1994	1994	1995	1995	1995	1994	1995
SHORT-TERM CARAVAN PARKS									
Establishments	No.	58	63	63	63	63	59
Capacity									
On-site vans	No.	284	269	276	272	273	248
Other powered sites	No.	2,977	3,085	3,095	3,090	3,101	2,895
Unpowered sites	No.	2,201	2,276	2,266	2,175	1,932	1,756
Cabins, etc.	No.	319	347	362	338	362	364
<i>Total capacity</i>	<i>No.</i>	<i>5,781</i>	<i>5,977</i>	<i>5,999</i>	<i>5,875</i>	<i>5,668</i>	<i>5,263</i>
Sites occupied by long-term guests	No.	229	260	273	280	269	216
Other sites permanently reserved	No.	944	979	986	1,021	1,018	984
Employment (persons)	No.	175	195	219	227	198	194
Site nights occupied	No.	147,146	140,206	169,002	211,504	156,710	134,839	622,307	672,055
Site occupancy rate	per cent	28.0	25.5	30.6	40.0	30.4	28.1	29.7	32.4
Takings from accommodation	\$'000	1,091	819	1,505	2,471	1,237	841	5,204	6,054
LONG-TERM CARAVAN PARKS									
Establishments	No.	12	12	12	12	12	13
Capacity									
On-site vans	No.	117	116	112	121	118	137
Other powered sites	No.	489	500	508	507	504	586
Unpowered sites	No.	225	236	238	233	233	340
Cabins, etc.	No.	96	95	96	98	102	91
<i>Total capacity</i>	<i>No.</i>	<i>927</i>	<i>947</i>	<i>954</i>	<i>959</i>	<i>957</i>	<i>1,154</i>
Sites occupied by long-term guests	No.	178	184	188	190	183	208
Other sites permanently reserved	No.	12	21	20	17	17	25
Employment (persons)	No.	44	37	47	43	40	44
Site nights occupied	No.	24,612	23,989	25,738	29,840	26,124	27,243	111,564	108,945
Site occupancy rate	per cent	29.2	27.5	29.3	34.6	30.0	25.7	31.9	29.7
Takings from accommodation	\$'000	344	217	313	416	286	270	1,451	1,284
TOTAL CARAVAN PARKS									
Establishments	No.	70	75	75	75	75	72
Capacity									
On-site vans	No.	401	385	388	393	391	385
Other powered sites	No.	3,466	3,585	3,603	3,597	3,605	3,481
Unpowered sites	No.	2,426	2,512	2,504	2,408	2,165	2,096
Cabins, etc.	No.	415	442	458	436	464	455
<i>Total capacity</i>	<i>No.</i>	<i>6,708</i>	<i>6,924</i>	<i>6,953</i>	<i>6,834</i>	<i>6,625</i>	<i>6,417</i>
Sites occupied by long-term guests	No.	407	444	461	470	452	424
Other sites permanently reserved	No.	956	1,000	1,006	1,038	1,035	1,009
Employment (persons)	No.	219	232	266	270	238	238
Site nights occupied	No.	171,758	164,195	194,740	241,344	182,834	162,082	733,871	781,000
Site occupancy rate	per cent	28.1	25.8	30.4	39.2	30.3	27.7	30.0	32.0
Takings from accommodation	\$'000	1,435	1,036	1,818	2,886	1,523	1,111	6,655	7,338

TABLE 3 — SUMMARY OF HOLIDAY FLATS, UNITS AND HOUSES, TASMANIA

Particulars	Unit	Quarter ended				Year ended			
		June 1994	September 1994	December 1994	March 1995	June 1995	September 1995	September 1994	September 1995
Letting entities	No.	52	53	52	55	54	54
Flats, units and houses									
Single bedroom	No.	260	264	265	272	230	226
Multiple bedroom	No.	533	540	551	595	600	595
<i>Total flats, units and houses</i>	<i>No.</i>	<i>793</i>	<i>804</i>	<i>816</i>	<i>867</i>	<i>830</i>	<i>821</i>	<i>..</i>	<i>..</i>
Bed spaces	No.	3,486	3,533	3,578	3,761	3,677	3,665
Employment (persons)	No.	313	305	339	382	295	343
Unit nights occupied	No.	35,926	31,286	42,775	56,752	32,897	28,778	155,448	161,202
Unit occupancy rate	per cent	49.8	42.5	57.0	72.7	43.6	38.3	53.9	53.1
Unit lettings	No.	16,928	14,542	21,186	26,177	15,872	13,236	72,914	76,471
Average length of stay	days	2.1	2.2	2.0	2.2	2.1	2.2	2.1	2.1
Takings from accommodation	\$'000	2,455	2,044	3,036	4,391	2,343	1,933	10,675	11,703

TABLE 4 — SUMMARY OF VISITOR HOSTELS, TASMANIA

Particulars	Unit	Quarter ended				Year ended			
		June 1994	September 1994	December 1994	March 1995	June 1995	September 1995	September 1994	September 1995
Establishments	No.	36	41	44	43	42	41
Bed spaces	No.	1,450	1,712	1,813	1,786	1,748	1,770
Employment (persons)	No.	90	95	112	115	113	95
Guest nights	No.	15,114	12,399	28,376	46,606	20,257	12,804	82,156	108,043
Bed occupancy rate	per cent	11.5	8.0	17.1	29.0	12.8	8.1	14.8	16.8
Guest arrivals	No.	9,441	7,518	17,106	28,328	12,733	8,046	55,369	66,213
Average length of stay	days	1.6	1.6	1.7	1.6	1.6	1.6	1.5	1.6
Takings from accommodation	\$'000	175	145	377	547	226	158	941	1,308

TABLE 5 — HOTELS, MOTELS AND GUEST HOUSES WITH FACILITIES BY STAR GRADING, TASMANIA

Particulars	Licensed hotels with facilities	Motels and guest houses	Star grading			Total
			1, 2 and Ungraded	3	4 and 5	
ESTABLISHMENTS, CAPACITY AND EMPLOYMENT						
<i>September quarter 1994—</i>						
Establishments	91	83	73	79	22	174
Guest rooms	3,513	1,803	1,368	2,499	1,449	5,316
Bed spaces	9,856	5,550	3,856	7,410	4,140	15,406
Employment (persons)	3,474	747	916	1,340	1,965	4,221
<i>September quarter 1995—</i>						
Establishments	92	87	66	86	27	179
Guest rooms	3,566	1,886	1,239	2,670	1,543	5,452
Bed spaces	9,946	5,781	3,455	7,868	4,404	15,727
Employment (persons)	3,445	777	841	1,414	1,967	4,222
ROOM NIGHTS OCCUPIED						
<i>September quarter 1994</i>	145,246	67,209	37,879	94,694	79,882	212,455
<i>1995—</i>						
July	44,877	21,414	10,968	29,563	25,760	66,291
August	43,819	21,332	10,284	30,222	24,645	65,151
September	51,484	28,201	13,003	38,517	28,165	79,685
<i>September quarter 1995</i>	140,180	70,947	34,255	98,302	78,570	211,127
ROOM OCCUPANCY RATES (per cent)						
<i>September quarter 1994</i>	45.0	40.6	30.1	41.2	60.0	43.5
<i>1995—</i>						
July	40.6	36.6	28.6	35.7	53.9	39.2
August	39.6	36.6	26.8	36.5	51.7	38.6
September	48.1	49.8	35.0	48.1	60.8	48.7
<i>September quarter 1995</i>	42.7	40.9	30.1	40.0	55.4	42.1
GUEST NIGHTS						
<i>September quarter 1994</i>	239,577	122,573	67,945	166,969	127,236	362,150
<i>1995—</i>						
July	72,858	38,223	18,292	51,683	41,106	111,081
August	68,081	38,725	16,695	52,869	37,242	106,806
September	87,126	53,085	22,884	71,252	46,075	140,211
<i>September quarter 1995</i>	228,065	130,033	57,871	175,804	124,423	358,098
BED OCCUPANCY RATES (per cent)						
<i>September quarter 1994</i>	26.4	24.0	19.2	24.5	33.4	25.6
<i>1995—</i>						
July	23.6	21.3	17.1	21.2	30.1	22.8
August	22.1	21.7	15.6	21.7	27.4	21.9
September	29.2	30.6	22.1	30.2	34.9	29.7
<i>September quarter 1995</i>	24.9	24.5	18.2	24.3	30.7	24.8
GUEST ARRIVALS						
<i>September quarter 1994</i>	125,155	69,307	40,065	94,006	60,391	194,462
<i>1995—</i>						
July	38,405	22,530	10,881	30,770	19,284	60,935
August	35,993	21,454	9,648	29,691	18,108	57,447
September	45,838	30,144	13,738	40,299	21,945	75,982
<i>September quarter 1995</i>	120,236	74,128	34,267	100,760	59,337	194,364
AVERAGE LENGTH OF STAY (days)						
<i>September quarter 1994</i>	1.9	1.8	1.7	1.8	2.1	1.9
<i>September quarter 1995</i>	1.9	1.8	1.7	1.7	2.1	1.8
TAKINGS FROM ACCOMMODATION (\$'000)						
<i>September quarter 1994</i>	11,109	4,120	2,096	5,534	7,599	15,229
<i>1995</i>						
July	3,538	1,328	650	1,759	2,458	4,866
August	3,382	1,305	592	1,763	2,332	4,687
September	4,107	1,842	817	2,379	2,753	5,948
<i>September quarter 1995</i>	11,026	4,475	2,058	5,900	7,543	15,501

TABLE 6—HOTELS, MOTELS AND GUEST HOUSES WITH FACILITIES BY ESTABLISHMENT SIZE, TASMANIA

Particulars	Establishment size (No. of rooms)						Total
	5-9	10-15	16-25	26-50	51-100	101+	
ESTABLISHMENTS, CAPACITY AND EMPLOYMENT							
<i>September quarter 1994—</i>							
Establishments	38	29	33	48	18	8	174
Guest rooms	267	327	677	1,650	1,146	1,249	5,316
Bed spaces	693	865	2,000	4,889	3,491	3,468	15,406
Employment (persons)	223	344	387	928	583	1,756	4,221
<i>September quarter 1995—</i>							
Establishments	41	30	31	50	19	8	179
Guest rooms	290	340	631	1,714	1,228	1,249	5,452
Bed spaces	747	925	1,760	5,118	3,763	3,414	15,727
Employment (persons)	229	330	387	931	656	1,689	4,222
ROOM NIGHTS OCCUPIED							
<i>September quarter 1994</i>	7,764	10,929	20,309	61,784	43,552	68,117	212,455
<i>1995—</i>							
July	2,725	3,870	6,567	20,712	11,941	20,476	66,291
August	2,662	3,874	6,298	20,181	11,939	20,197	65,151
September	3,311	4,192	7,615	25,262	16,599	22,706	79,685
<i>September quarter 1995</i>	8,698	11,936	20,480	66,155	40,479	63,379	211,127
ROOM OCCUPANCY RATES (per cent)							
<i>September quarter 1994</i>	31.8	36.5	32.6	40.7	41.3	59.3	43.5
<i>1995—</i>							
July	30.3	36.7	33.6	39.0	31.4	52.9	39.2
August	30.2	36.8	32.2	38.0	31.4	52.2	38.6
September	38.1	41.1	40.2	49.1	45.1	60.6	48.7
<i>September quarter 1995</i>	32.8	38.2	35.3	42.0	35.8	55.2	42.1
GUEST NIGHTS							
<i>September quarter 1994</i>	13,625	17,839	35,956	107,016	81,239	106,475	362,150
<i>1995—</i>							
July	4,197	6,134	10,824	36,307	21,693	31,926	111,081
August	4,151	5,941	10,232	33,771	22,261	30,450	106,806
September	5,485	6,980	13,496	46,830	31,337	36,083	140,211
<i>September quarter 1995</i>	13,833	19,055	34,552	116,908	75,291	98,459	358,098
BED OCCUPANCY RATES (per cent)							
<i>September quarter 1994</i>	21.5	22.5	19.5	23.8	25.3	33.4	25.6
<i>1995—</i>							
July	18.1	21.4	19.8	22.9	18.6	30.2	22.8
August	18.3	20.7	18.8	21.3	19.1	28.8	21.9
September	24.5	25.2	25.6	30.5	27.8	35.2	29.7
<i>September quarter 1995</i>	20.3	22.4	21.3	24.8	21.7	31.3	24.8
GUEST ARRIVALS							
<i>September quarter 1994</i>	8,858	10,298	20,818	66,654	44,157	43,677	194,462
<i>1995—</i>							
July	2,707	3,543	6,128	22,116	12,692	13,749	60,935
August	2,450	3,350	5,695	20,685	11,803	13,464	57,447
September	3,246	4,433	8,151	27,736	17,422	14,994	75,982
<i>September quarter 1995</i>	8,403	11,326	19,974	70,537	41,917	42,207	194,364
AVERAGE LENGTH OF STAY (days)							
<i>September quarter 1994</i>	1.5	1.7	1.7	1.6	1.8	2.4	1.9
<i>September quarter 1995</i>	1.6	1.7	1.7	1.7	1.8	2.3	1.8
TAKINGS FROM ACCOMMODATION (\$'000)							
<i>September quarter 1994</i>	452	540	1,063	3,590	3,277	6,307	15,229
<i>1995</i>							
July	153	212	335	1,297	918	1,951	4,866
August	153	199	314	1,256	882	1,882	4,687
September	189	215	415	1,583	1,354	2,193	5,948
<i>September quarter 1995</i>	495	626	1,064	4,135	3,154	6,026	15,501

TABLE 7 — HOTELS, MOTELS AND GUEST HOUSES WITH FACILITIES BY STATISTICAL DIVISION,
TASMANIA

Particulars	Greater Hobart (SD)			Southern (SD)			Northern (SD)		
	Licensed hotels with facilities	Motels and guest houses	Total	Licensed hotels with facilities	Motels and guest houses	Total	Licensed hotels with facilities	Motels and guest houses	Total
ESTABLISHMENTS, CAPACITY AND EMPLOYMENT									
<i>September quarter 1994—</i>									
Establishments	24	27	51	14	9	23	31	21	52
Guest rooms	1,222	649	1,871	483	98	581	1,089	418	1,507
Bed spaces	3,199	1,935	5,134	1,460	358	1,818	3,192	1,386	4,578
Employment (persons)	1,567	288	1,855	235	48	283	1,122	130	1,252
<i>September quarter 1995</i>									
Establishments	23	27	50	14	10	24	32	23	55
Guest rooms	1,221	662	1,883	480	118	598	1,132	439	1,571
Bed spaces	3,153	2,009	5,162	1,454	414	1,868	3,321	1,402	4,723
Employment (persons)	1,444	282	1,726	244	68	312	1,230	136	1,366
ROOM NIGHTS OCCUPIED									
<i>September quarter 1994</i>	66,684	31,397	98,081	11,480	2,138	13,618	44,939	15,977	60,916
<i>1995—</i>									
July	18,399	8,941	27,340	3,120	1,114	4,234	16,098	5,292	21,390
August	18,857	8,710	27,567	2,871	1,074	3,945	15,073	5,594	20,667
September	22,468	12,022	34,490	4,221	1,539	5,760	16,459	6,818	23,277
<i>September quarter 1995</i>	59,724	29,673	89,397	10,212	3,727	13,939	47,630	17,704	65,334
ROOM OCCUPANCY RATES (per cent)									
<i>September quarter 1994</i>	59.4	52.7	57.1	25.8	23.7	25.5	44.9	41.5	43.9
<i>1995—</i>									
July	48.6	43.6	46.8	21.0	30.5	22.8	45.9	38.9	43.9
August	49.8	42.4	47.2	19.3	29.4	21.3	43.0	41.7	42.6
September	61.3	60.5	61.1	29.3	43.5	32.1	48.5	51.8	49.4
<i>September quarter 1995</i>	53.2	48.7	51.6	23.1	34.3	25.3	45.7	44.0	45.3
GUEST NIGHTS									
<i>September quarter 1994</i>	104,445	56,433	160,878	23,276	4,928	28,204	75,536	30,837	106,373
<i>1995—</i>									
July	29,163	16,449	45,612	6,332	2,370	8,702	25,526	9,264	34,790
August	28,539	17,195	45,734	5,544	2,128	7,672	22,966	9,833	32,799
September	35,209	22,522	57,731	9,219	3,540	12,759	28,747	13,226	41,973
<i>September quarter 1995</i>	92,911	56,166	149,077	21,095	8,038	29,133	77,239	32,323	109,562
BED OCCUPANCY RATES (per cent)									
<i>September quarter 1994</i>	35.5	31.8	34.1	17.3	15.0	16.9	25.7	24.2	25.3
<i>1995—</i>									
July	29.8	26.4	28.5	14.0	18.5	15.0	24.8	21.3	23.8
August	29.2	27.6	28.6	12.3	16.6	13.2	22.3	22.9	22.5
September	37.2	37.4	37.3	21.1	28.5	22.8	28.9	31.4	29.6
<i>September quarter 1995</i>	32.0	30.4	31.4	15.8	21.1	17.0	25.3	25.2	25.2
GUEST ARRIVALS									
<i>September quarter 1994</i>	43,752	27,335	71,087	17,597	3,424	21,021	40,734	18,137	58,871
<i>1995—</i>									
July	12,104	8,192	20,296	4,999	1,461	6,460	13,795	5,853	19,648
August	12,058	7,857	19,915	4,290	1,307	5,597	12,773	5,760	18,533
September	14,840	11,360	26,200	7,129	2,314	9,443	15,045	7,214	22,259
<i>September quarter 1995</i>	39,002	27,409	66,411	16,418	5,082	21,500	41,613	18,827	60,440
AVERAGE LENGTH OF STAY (days)									
<i>September quarter 1994</i>	2.4	2.1	2.3	1.3	1.4	1.3	1.9	1.7	1.8
<i>September quarter 1995</i>	2.4	2.0	2.2	1.3	1.6	1.4	1.9	1.7	1.8
TAKINGS FROM ACCOMMODATION (\$'000)									
<i>September quarter 1994</i>	5,761	1,839	7,600	616	136	752	3,161	933	4,093
<i>1995—</i>									
July	1,627	532	2,159	175	114	289	1,205	289	1,494
August	1,645	493	2,137	154	121	275	1,120	308	1,427
September	2,021	719	2,740	259	157	416	1,194	405	1,598
<i>September quarter 1995</i>	5,292	1,744	7,036	588	393	981	3,519	1,001	4,520

TABLE 7 — HOTELS, MOTELS AND GUEST HOUSES WITH FACILITIES BY STATISTICAL DIVISION,
TASMANIA—continued

Particulars	Mersey-Lyell (SD)			Total Tasmania			East Coast (a)
	Licensed hotels with facilities	Motels and guest houses	Total	Licensed hotels with facilities	Motels and guest houses	Total	Total
ESTABLISHMENTS, CAPACITY AND EMPLOYMENT							
<i>September quarter 1994</i>							
Establishments	22	26	48	91	83	174	14
Guest rooms	719	638	1,357	3,513	1,803	5,316	455
Bed spaces	2,005	1,871	3,876	9,856	5,350	15,406	1,441
Employment (persons)	550	281	831	3,474	747	4,221	228
<i>September quarter 1995</i>							
Establishments	23	27	50	92	87	179	14
Guest rooms	733	667	1,400	3,566	1,886	5,452	465
Bed spaces	2,018	1,956	3,974	9,946	5,781	15,727	1,478
Employment (persons)	527	291	818	3,445	777	4,222	274
ROOM NIGHTS OCCUPIED							
<i>September quarter 1994</i>	22,143	17,697	39,840	145,246	67,209	212,455	10,758
<i>1995—</i>							
July	7,260	6,067	13,327	44,877	21,414	66,291	3,558
August	7,018	5,954	12,972	43,819	21,332	65,151	3,281
September	8,336	7,822	16,158	51,484	28,201	79,685	4,896
<i>September quarter 1995</i>	22,614	19,843	42,457	140,180	70,947	211,127	11,735
ROOM OCCUPANCY RATES (per cent)							
<i>September quarter 1994</i>	33.5	30.2	31.9	45.0	40.6	43.5	25.7
<i>1995—</i>							
July	32.0	29.3	30.7	40.6	36.6	39.2	24.7
August	30.9	28.8	29.9	39.6	36.6	38.6	22.8
September	37.9	39.1	38.5	48.1	49.8	48.7	35.1
<i>September quarter 1995</i>	33.5	32.3	33.0	42.7	40.9	42.1	27.4
GUEST NIGHTS							
<i>September quarter 1994</i>	36,320	30,375	66,695	239,577	122,573	362,150	21,536
<i>1995—</i>							
July	11,837	10,140	21,977	72,858	38,223	111,081	6,993
August	11,032	9,569	20,601	68,081	38,725	106,806	6,152
September	13,951	13,797	27,748	87,126	53,085	140,211	10,355
<i>September quarter 1995</i>	36,820	33,506	70,326	228,065	130,033	358,098	23,500
BED OCCUPANCY RATES (per cent)							
<i>September quarter 1994</i>	19.7	17.6	18.7	26.4	24.0	25.6	16.2
<i>1995—</i>							
July	18.9	16.7	17.8	23.6	21.3	22.8	15.3
August	17.6	15.8	16.7	22.1	21.7	21.9	13.4
September	23.0	23.5	23.3	29.2	30.6	29.7	23.4
<i>September quarter 1995</i>	19.8	18.6	19.2	24.9	24.5	24.8	17.3
GUEST ARRIVALS							
<i>September quarter 1994</i>	23,072	20,411	43,483	125,155	69,307	194,462	15,643
<i>1995—</i>							
July	7,507	7,024	14,531	38,405	22,530	60,935	5,130
August	6,872	6,530	13,402	35,993	21,454	57,447	4,543
September	8,824	9,256	18,080	45,838	30,144	75,982	7,371
<i>September quarter 1995</i>	23,203	22,810	46,013	120,236	74,128	194,364	17,044
AVERAGE LENGTH OF STAY (days)							
<i>September quarter 1994</i>	1.6	1.5	1.5	1.9	1.8	1.9	1.4
<i>September quarter 1995</i>	1.6	1.5	1.5	1.9	1.8	1.8	1.4
TAKINGS FROM ACCOMMODATION (\$'000)							
<i>September quarter 1994</i>	1,572	1,212	2,783	11,109	4,120	15,229	546
<i>1995—</i>							
July	531	393	924	3,538	1,328	4,866	230
August	463	384	846	3,382	1,305	4,687	223
September	633	561	1,194	4,107	1,842	5,948	324
<i>September quarter 1995</i>	1,626	1,338	2,964	11,026	4,475	15,501	777

(a) The East Coast Tourist Area comprises Glamorgan/Spring Bay (M) and Break O'Day (M).

TABLE 8 — HOTELS, MOTELS AND GUEST HOUSES WITH FACILITIES: STATISTICAL DIVISIONS

Statistical Divisions and selected Statistical Local Areas	Establish- ments	Guest rooms	Bed spaces	Employ- ment (persons)	Room nights occupied			Room occupancy rates (per cent)				
					July	Aug.	Sept.	Sept. qtr	July	Aug.	Sept.	Sept. qtr
Clarence (C)	4	54	158	40	508	471	758	1,737	30.3	28.1	46.8	35.0
Glenorchy (C)	6	161	412	93	2,126	2,058	2,925	7,109	42.6	41.2	60.6	48.0
Hobart (C)												
Inner	6	432	1,063	227	5,021	5,928	7,518	18,467	37.5	44.3	58.0	46.5
Remainder	29	1,162	3,323	1,310	19,066	18,546	22,564	60,176	52.9	51.5	64.7	56.3
Total	35	1,594	4,386	1,537	24,087	24,474	30,082	78,643	48.7	49.5	62.9	53.6
Balance	5	74	206	56	619	564	725	1,908	27.0	24.6	32.7	28.0
Greater Hobart (SD)	50	1,883	5,162	1,726	27,340	27,567	34,490	89,397	46.8	47.2	61.1	51.6
Glamorgan/Spring Bay (M)	9	304	1,052	177	2,599	2,340	3,407	8,346	27.6	24.8	37.4	29.8
Tasman (M)	6	138	427	81	1,169	1,058	1,774	4,001	27.3	24.7	42.9	31.5
Balance	9	156	389	54	466	547	579	1,592	9.6	11.3	12.4	11.1
Southern (SD)	24	598	1,868	312	4,237	3,945	5,760	13,939	22.8	21.3	32.1	25.3
Break O'Day (M)	5	161	426	97	959	941	1,489	3,389	19.2	18.9	30.8	22.9
Launceston (C)												
Inner	10	475	1,335	349	8,232	7,474	7,609	23,315	55.9	50.8	53.4	53.4
Parts B & C	23	601	1,987	299	7,286	7,510	9,459	24,255	39.1	40.3	52.5	43.9
Total	33	1,076	3,322	648	15,518	14,984	17,068	47,570	46.5	44.9	52.9	48.1
Northern Midlands (M) — Pts A & B	3	25	67	17	119	147	187	453	15.4	19.0	24.9	19.7
West Tamar (M) — Pts A & B	6	94	287	116	1,044	1,085	1,209	3,338	35.8	37.2	42.9	38.6
Balance	8	215	621	488	3,750	3,510	3,324	10,584	56.3	54.2	51.5	54.0
Northern (SD)	55	1,571	4,723	1,366	21,390	20,667	23,277	65,334	43.9	42.6	49.4	45.3
Burnie (C) — Pts A & B	8	230	555	141	2,568	2,668	2,577	7,813	36.0	37.4	37.3	36.9
Central Coast (M) — Pts A & B	5	115	291	86	1,081	1,077	1,179	3,337	30.3	30.2	34.2	31.5
Circular Head (M)	3	94	236	81	813	1,007	1,015	2,835	27.9	34.6	36.0	32.8
Devonport (C)	8	236	691	129	2,249	2,232	2,775	7,256	30.7	30.5	39.2	33.4
Waratah/Wynyard (M) — Pts A & B	8	133	352	65	798	836	895	2,529	19.4	20.3	22.4	20.7
West Coast (M)	11	419	1,228	169	3,080	2,668	4,644	10,392	23.7	20.5	36.9	27.0
Balance	7	173	621	147	2,738	2,484	3,073	8,295	51.1	46.3	59.2	52.1
Mersey-Lyell (SD)	50	1,400	3,974	818	13,327	12,972	16,158	42,457	30.7	29.9	38.5	33.0
Total Tasmania	179	5,452	15,727	4,222	66,291	65,151	79,685	211,127	39.2	38.6	48.7	42.1

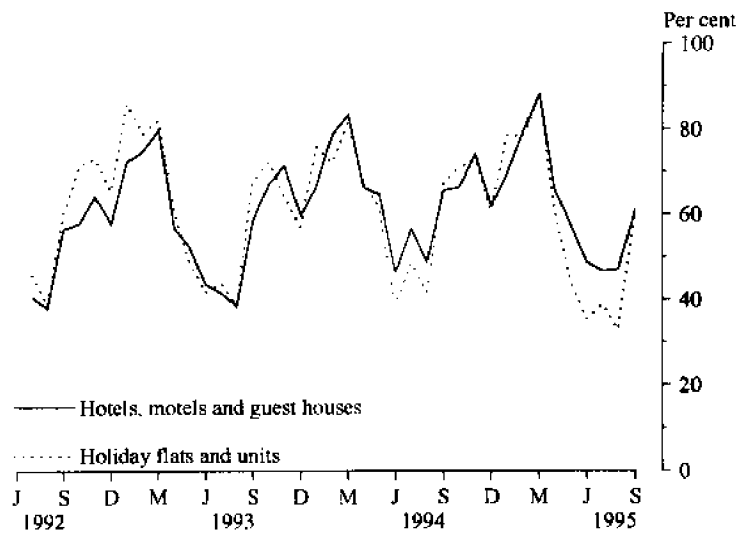
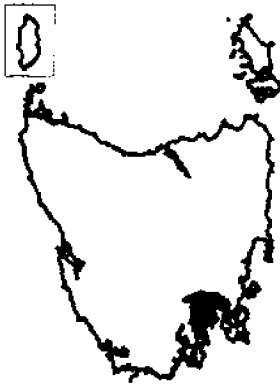
AND SELECTED STATISTICAL LOCAL AREAS, TASMANIA, SEPTEMBER QUARTER 1995

<i>Guest nights</i>				<i>Guest arrivals</i>				<i>Takings from accommodation (\$'000)</i>			
<i>July</i>	<i>Aug.</i>	<i>Sept.</i>	<i>Sept. qtr</i>	<i>July</i>	<i>Aug.</i>	<i>Sept.</i>	<i>Sept. qtr</i>	<i>July</i>	<i>Aug.</i>	<i>Sept.</i>	<i>Sept. qtr</i>
841	764	1,438	3,043	638	482	873	1,993	31	24	45	100
3,423	3,200	5,091	11,714	1,777	1,736	2,657	6,170	97	88	135	320
7,523	8,853	12,062	28,438	4,031	4,097	5,695	13,823	341	412	528	1,282
32,848	31,950	37,951	102,749	13,298	13,163	16,332	42,793	1,658	1,585	1,994	5,237
40,371	40,803	50,013	131,187	17,329	17,260	22,027	56,616	2,000	1,997	2,522	6,519
977	967	1,189	3,133	552	437	643	1,632	31	29	38	97
45,612	45,734	57,731	149,077	20,296	19,915	26,200	66,411	2,159	2,137	2,740	7,036
5,333	4,604	7,610	17,547	3,913	3,407	5,363	12,683	189	182	258	628
2,489	2,118	4,040	8,647	1,951	1,570	3,307	6,828	75	62	120	258
880	950	1,109	2,939	596	620	773	1,989	25	31	38	95
8,702	7,672	12,759	29,133	6,460	5,597	9,443	21,500	289	275	416	981
1,660	1,548	2,745	5,953	1,217	1,136	2,008	4,361	41	41	66	148
12,027	10,321	12,424	34,772	7,005	6,305	6,584	19,894	616	560	567	1,743
13,219	13,524	18,909	45,652	8,067	8,134	10,054	26,255	452	476	592	1,520
25,246	23,845	31,333	80,424	15,072	14,439	16,638	46,149	1,068	1,036	1,159	3,264
168	219	280	667	97	139	169	405	4	5	8	17
1,928	1,813	2,262	6,003	1,067	958	1,261	3,286	60	60	68	189
5,788	5,374	5,353	16,515	2,195	1,861	2,183	6,239	321	285	296	902
34,790	32,799	41,973	109,562	19,648	18,533	22,259	60,440	1,494	1,427	1,598	4,520
3,236	3,444	3,544	10,224	2,454	2,574	2,700	7,728	162	170	166	498
1,600	1,561	1,817	4,978	1,153	1,125	1,217	3,495	51	52	59	162
1,281	1,520	1,712	4,513	944	1,052	1,473	3,469	46	53	66	165
3,164	2,997	4,357	10,518	2,166	2,037	2,990	7,193	151	151	189	490
1,515	1,405	1,651	4,571	1,022	880	1,121	3,023	43	40	46	129
5,506	4,584	8,323	18,413	3,684	2,986	5,322	11,992	177	153	309	639
5,675	5,090	6,344	17,109	3,108	2,748	3,257	9,113	294	228	359	881
21,977	20,601	27,748	70,326	14,531	13,402	18,080	46,013	924	846	1,194	2,964
111,081	106,806	140,211	358,098	60,935	57,447	75,982	194,364	4,866	4,687	5,948	15,501

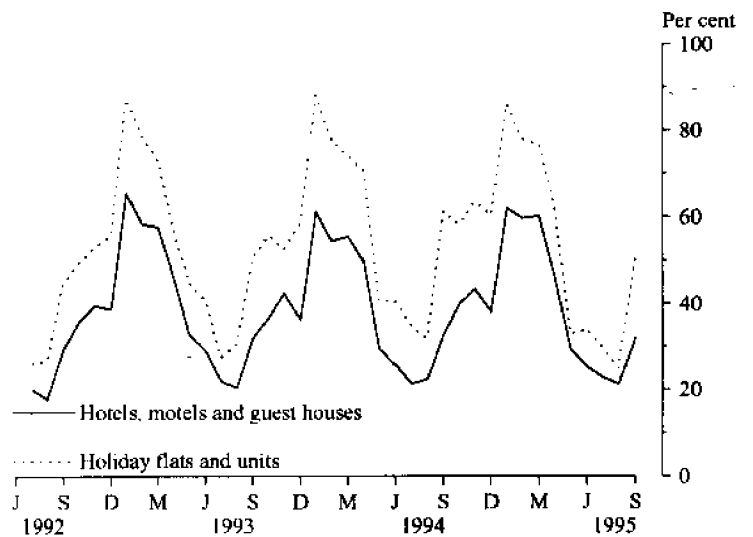
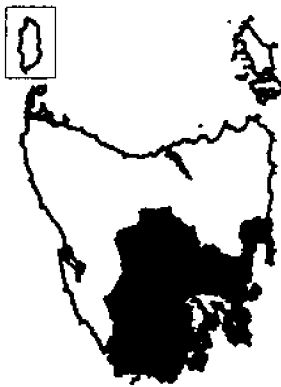
MONTHLY ROOM/UNIT OCCUPANCY RATES

Graphs on these pages compare room occupancy rates for hotels, motels and guest houses with facilities with unit occupancy rates for holiday unit establishments for each Statistical Division and the East Coast Tourist area.

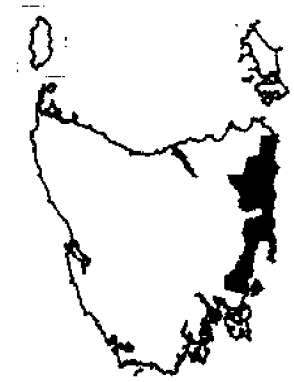
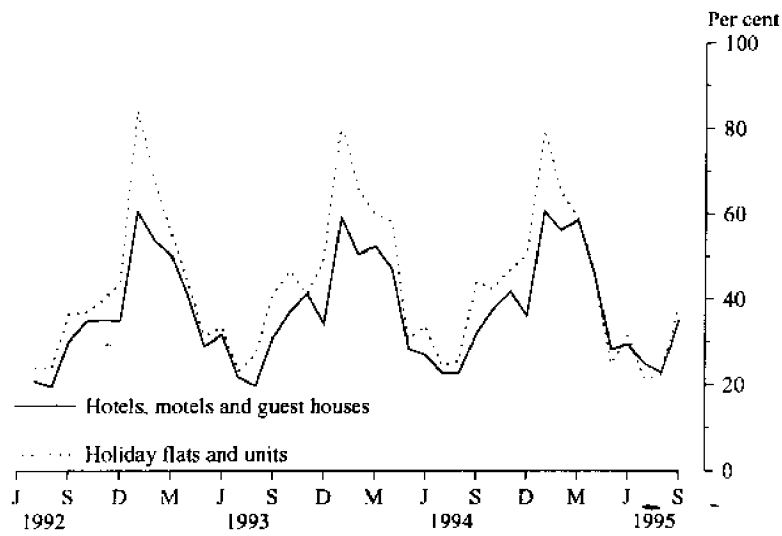
GREATER HOBART STATISTICAL DIVISION



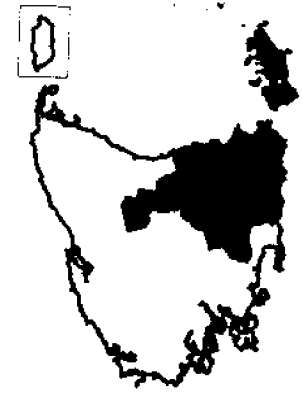
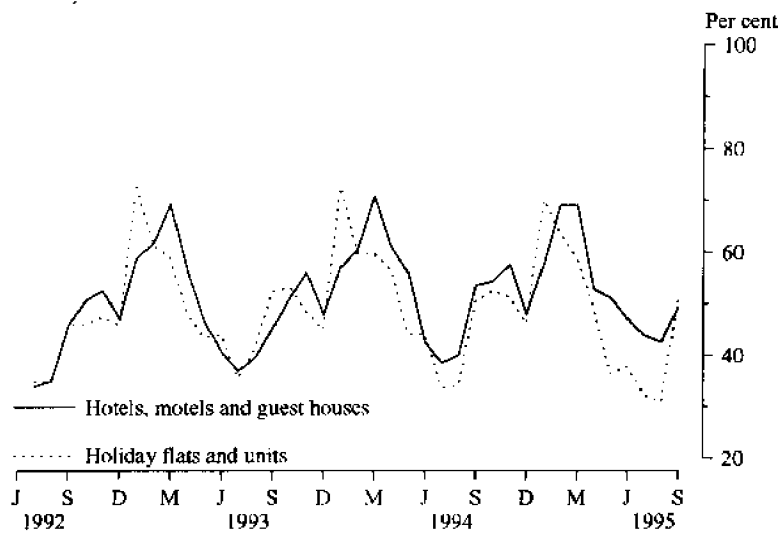
SOUTHERN STATISTICAL DIVISION



EAST COAST TOURIST AREA



NORTHERN STATISTICAL DIVISION



MERSEY-LYELL STATISTICAL DIVISION

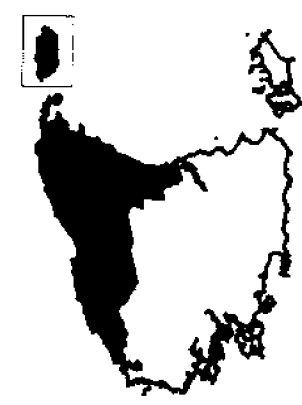
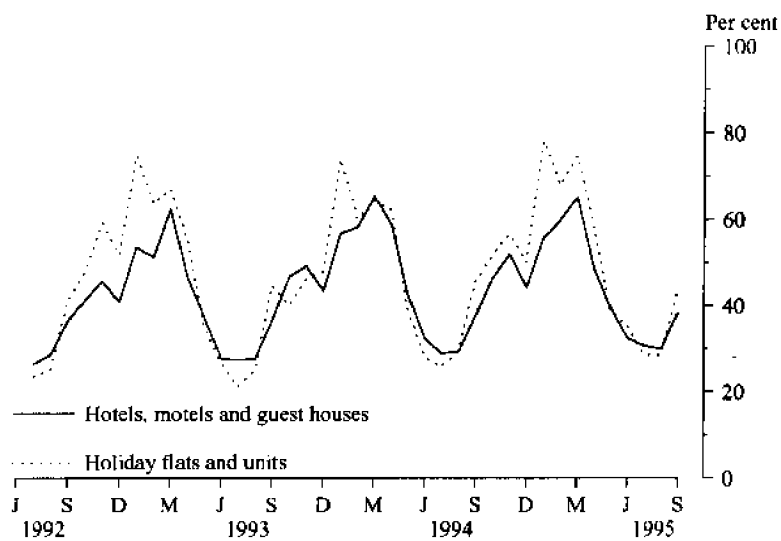


TABLE 9 — HOLIDAY FLATS, UNITS AND HOUSES BY STATISTICAL DIVISION AND SELECTED STATISTICAL AREAS, TASMANIA

Particulars	Northern (SD)					Mersey-Lyell (SD)	Total Tasmania	East Coast (a)
	Greater Hobart (SD)	Southern (SD)	Greater Launceston and Central North (SSDs)	North Eastern (SSD)	Total			
LETTING ENTITIES, CAPACITY AND EMPLOYMENT								
September quarter 1994								
Letting entities	13	9	9	7	16	15	53	11
Flats, units and houses								
Single bedroom	56	17	117	30	147	44	264	41
Multiple bedroom	174	80	115	71	186	100	540	95
Total flats, units and houses	230	97	232	101	333	144	804	136
Bed spaces	1,020	509	862	477	1,339	665	3,533	638
Employment (persons)	68	43	121	30	151	43	305	51
September quarter 1995—								
Letting entities	13	9	11	7	18	14	54	11
Flats, units and houses								
Single bedroom	48	21	85	30	115	42	226	41
Multiple bedroom	183	81	139	71	210	121	595	95
Total flats, units and houses	231	102	224	101	325	163	821	136
Bed spaces	1,039	511	908	474	1,382	733	3,665	625
Employment (persons)	73	44	152	28	180	46	343	50
UNIT NIGHTS OCCUPIED								
September quarter 1994	11,100	3,795	10,105	1,946	12,051	4,340	31,286	3,897
1995—								
July	2,791	821	2,662	581	3,243	1,438	8,293	810
August	2,359	788	2,408	691	3,099	1,446	7,692	944
September	4,185	1,547	3,993	941	4,934	2,127	12,793	1,570
September quarter 1995	9,335	3,156	9,063	2,213	11,276	5,011	28,778	3,324
UNIT OCCUPANCY RATES (per cent)								
September quarter 1994	52.5	42.5	47.3	20.9	39.3	33.5	42.5	31.1
1995—								
July	39.0	29.8	38.3	18.6	32.2	28.5	33.1	21.2
August	32.9	24.9	34.7	22.1	30.8	28.6	30.2	22.4
September	60.4	50.6	59.4	31.1	50.6	43.5	51.9	38.5
September quarter 1995	43.9	35.1	44.0	23.8	37.7	33.4	38.3	27.5
UNIT LETTINGS								
September quarter 1994	3,271	2,534	5,616	965	6,581	2,156	14,542	2,241
1995—								
July	890	564	1,505	271	1,776	632	3,862	454
August	790	460	1,348	257	1,605	679	3,534	439
September	1,554	938	1,870	422	2,292	1,056	5,840	881
September quarter 1995	3,234	1,962	4,723	950	5,673	2,367	13,236	1,774
AVERAGE LENGTH OF STAY (days)								
September quarter 1994	3.4	1.5	1.8	2.0	1.8	2.0	2.2	1.7
1995—								
July	3.1	1.5	1.8	2.1	1.8	2.3	2.1	1.8
August	3.0	1.7	1.8	2.7	1.9	2.1	2.2	2.2
September	2.7	1.6	2.1	2.2	2.2	2.0	2.2	1.8
September quarter 1995	2.9	1.6	1.9	2.3	2.0	2.1	2.2	1.9
TAKINGS FROM ACCOMMODATION (\$'000)								
September quarter 1994	724	280	736	89	824	217	2,044	250
1995—								
July	185	58	204	24	228	87	558	47
August	156	62	176	32	207	60	485	63
September	285	118	337	45	382	105	890	102
September quarter 1995	625	238	716	102	818	253	1,933	212

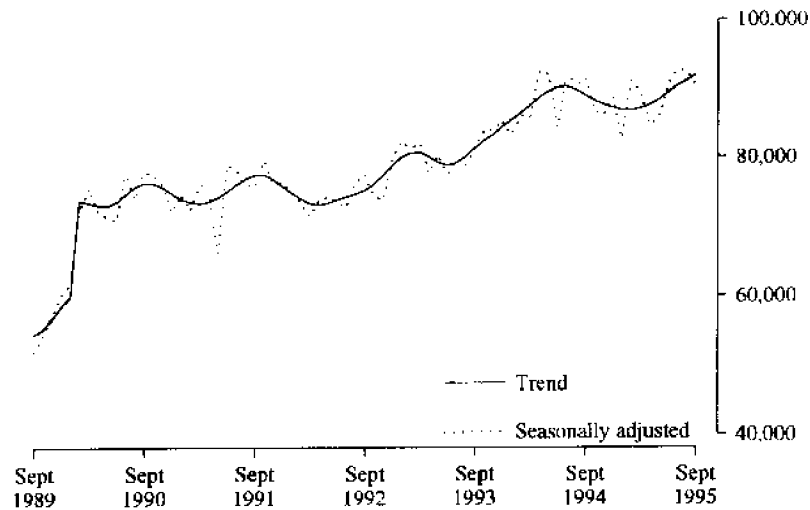
(a) The East Coast Tourist Area comprises Glamorgan/Spring Bay (M) and Break O' Day (M).

TABLE 10 — CARAVAN PARKS BY STATISTICAL DIVISION AND SELECTED STATISTICAL AREAS, TASMANIA

Particulars	Northern (SD)					Total	Mersey-Lyell (SD)	Total Tasmania	East Coast (a)
	Greater Hobart (SD)	Southern (SD)	Greater Launceston and Central North (SSDs)	North Eastern (SSD)					
ESTABLISHMENTS, CAPACITY AND EMPLOYMENT									
<i>September quarter 1994 -</i>									
Establishments	8	18	12	8	20	29	75	11	
Capacity									
On-site vans	77	68	53	23	76	164	385	57	
Other powered sites	307	787	501	516	1,017	1,474	3,585	647	
Unpowered sites	262	388	562	631	1,193	669	2,512	530	
Cabins, flats, etc.	62	117	70	20	90	173	442	76	
<i>Total capacity</i>	<i>708</i>	<i>1,360</i>	<i>1,186</i>	<i>1,190</i>	<i>2,376</i>	<i>2,480</i>	<i>6,924</i>	<i>1,310</i>	
Sites occupied by long-term guests	90	30	83	7	90	234	444	32	
Other sites permanently reserved	11	325	98	283	381	283	1,000	355	
Employment (persons)	31	64	35	20	55	82	232	39	
<i>September quarter 1995</i>									
Establishments	7	18	12	8	20	27	72	11	
Capacity									
On-site vans	78	68	56	25	81	158	385	57	
Other powered sites	243	788	484	504	988	1,462	3,481	656	
Unpowered sites	252	373	307	554	861	610	2,096	520	
Cabins, flats, etc.	66	128	72	20	92	169	455	77	
<i>Total capacity</i>	<i>639</i>	<i>1,357</i>	<i>919</i>	<i>1,103</i>	<i>2,022</i>	<i>2,399</i>	<i>6,417</i>	<i>1,310</i>	
Sites occupied by long-term guests	74	26	86	9	95	229	424	31	
Other sites permanently reserved	7	332	102	288	390	280	1,009	358	
Employment (persons)	30	69	35	22	57	82	238	42	
SITE NIGHTS OCCUPIED									
<i>September quarter 1994</i>	<i>16,140</i>	<i>38,060</i>	<i>22,266</i>	<i>29,473</i>	<i>51,739</i>	<i>58,256</i>	<i>164,195</i>	<i>40,695</i>	
<i>1995:</i>									
July	4,550	12,109	7,279	9,880	17,159	18,442	52,260	13,131	
August	4,864	12,222	7,201	10,123	17,324	18,582	52,992	13,446	
September	4,933	14,202	7,671	10,222	17,893	19,802	56,830	15,083	
<i>September quarter 1995</i>	<i>14,347</i>	<i>38,533</i>	<i>22,151</i>	<i>30,225</i>	<i>52,376</i>	<i>56,826</i>	<i>162,082</i>	<i>41,660</i>	
SITE OCCUPANCY RATES (per cent)									
September quarter 1994	24.8	30.4	20.4	26.9	23.7	25.5	25.8	33.8	
<i>1995:</i>									
July	23.0	30.2	25.6	30.2	28.0	24.8	26.7	33.0	
August	24.6	29.1	25.3	30.9	28.3	25.0	26.8	33.8	
September	25.7	34.9	27.8	30.9	29.5	27.5	29.5	38.4	
September quarter 1995	24.4	31.4	26.2	30.7	28.6	25.7	27.7	35.1	
TAKINGS FROM ACCOMMODATION (\$'000)									
<i>September quarter 1994</i>	<i>191</i>	<i>206</i>	<i>177</i>	<i>59</i>	<i>236</i>	<i>402</i>	<i>1,036</i>	<i>191</i>	
<i>1995—</i>									
July	62	64	59	14	73	112	310	55	
August	67	56	59	18	76	122	321	54	
September	85	141	79	24	103	151	480	125	
<i>September quarter 1995</i>	<i>213</i>	<i>261</i>	<i>197</i>	<i>56</i>	<i>253</i>	<i>385</i>	<i>1,111</i>	<i>234</i>	

(a) The East Coast Tourist Area comprises Glamorgan/Spring Bay (M) and Break O'Day (M).

HOTEL/MOTEL ROOM NIGHTS



HOLIDAY UNIT NIGHTS

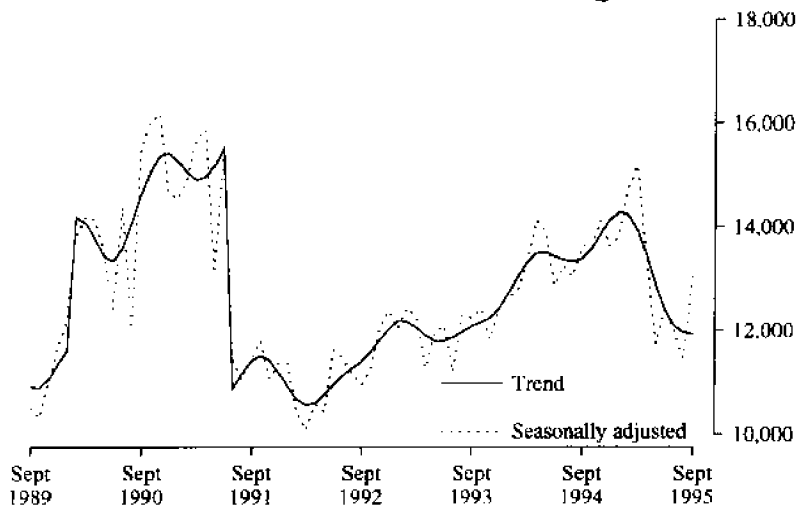


TABLE II. HOTEL & MOTEL ETC. ROOM NIGHTS, HOLIDAY UNIT NIGHTS AND CARAVAN PARK SITE NIGHTS: SEASONALLY ADJUSTED AND TREND ESTIMATES

		Hotel, motel etc. with facilities, room nights		Holiday unit nights		Caravan park site nights	
		Seasonally adjusted	Trend	Seasonally adjusted	Trend	Seasonally adjusted	Trend
1993	July	79,536	79,100	11,204	11,864	58,060	59,271
	August	78,720	80,070	12,306	11,969	59,465	59,678
	September	81,258	81,331	12,242	12,078	59,023	60,013
	October	83,990	82,472	12,436	12,156	60,679	60,032
	November	84,061	83,360	11,823	12,247	63,915	59,799
	December	85,032	84,332	12,428	12,432	57,594	59,575
1994	January	83,197	85,334	12,660	12,704	57,698	59,476
	February	85,954	86,418	12,736	13,025	58,343	59,611
	March	85,705	87,510	13,332	13,317	60,093	60,144
	April	92,496	88,641	14,124	13,483	64,568	61,031
	May	91,910	89,620	13,901	13,497	61,895	61,990
	June	84,244	90,136	12,859	13,421	59,465	62,929
	July	92,055	90,208	13,241	13,353	65,256	63,887
	August	90,459	89,745	13,033	13,331	65,559	64,929
	September	91,388	88,951	13,623	13,387	64,863	65,862
	October	86,595	88,173	13,592	13,568	65,403	66,368
	November	86,023	87,605	14,120	13,859	71,036	66,322
	December	88,640	87,114	13,618	14,134	64,909	65,847
1995	January	82,686	86,788	13,824	14,279	62,806	65,360
	February	90,988	86,814	14,743	14,232	64,669	65,132
	March	89,351	87,101	15,177	13,921	64,292	65,022
	April	84,549	87,657	13,330	13,416	67,573	65,054
	May	85,627	88,411	11,740	12,857	65,425	65,193
	June	90,403	89,362	12,448	12,390	64,886	65,189
	July	92,641	90,333	12,002	12,098	64,234	65,112
	August	92,331	91,118	11,464	11,954	63,446	65,123
	September	90,259	91,949	13,040	11,930	67,549	65,245

TABLE 12—VISITOR HOSTELS BY STATISTICAL DIVISION, TASMANIA

Particulars	Greater Hobart (SD)	Southern (SD)	Greater Hobart (SD) and Southern (SD)	Northern (SD)	Mersey-Lyell (SD)	Total Tasmania
ESTABLISHMENTS, CAPACITY AND EMPLOYMENT						
<i>September quarter 1994—</i>						
Establishments	8	15	23	9	9	41
Bed spaces	450	405	855	295	562	1,712
Employment (persons)	38	21	59	15	21	95
<i>September quarter 1995—</i>						
Establishments	7	17	24	9	8	41
Bed spaces	394	542	936	294	540	1,770
Employment (persons)	30	28	58	15	22	95
GUEST NIGHTS						
<i>September quarter 1994</i>	4,957	2,381	7,338	1,451	3,610	12,399
<i>1995—</i>						
July	1,454	808	2,262	726	1,139	4,127
August	1,397	668	2,065	401	924	3,390
September	1,962	1,069	3,031	338	1,918	5,287
<i>September quarter 1995</i>	4,813	2,545	7,358	1,465	3,981	12,804
BED OCCUPANCY RATES (per cent)						
September quarter 1994	12.0	6.4	9.3	5.3	7.2	8.0
<i>1995—</i>						
July	11.9	4.8	7.8	8.0	9.0	8.1
August	11.4	4.0	7.1	4.4	5.5	6.2
September	16.6	6.6	10.8	3.8	11.8	10.0
September quarter 1995	13.3	5.1	8.5	5.4	8.7	8.1
GUEST ARRIVALS						
<i>September quarter 1994</i>	2,707	1,829	4,536	1,015	1,967	7,518
<i>1995—</i>						
July	793	559	1,352	463	758	2,573
August	642	489	1,131	307	656	2,094
September	915	766	1,681	284	1,414	3,379
<i>September quarter 1995</i>	2,350	1,814	4,164	1,054	2,828	8,046
AVERAGE LENGTH OF STAY (days)						
September quarter 1994	1.8	1.3	1.6	1.4	1.8	1.6
<i>1995—</i>						
July	1.8	1.4	1.7	1.6	1.5	1.6
August	2.2	1.4	1.8	1.3	1.4	1.6
September	2.1	1.4	1.8	1.2	1.4	1.6
September quarter 1995	2.0	1.4	1.8	1.4	1.4	1.6
TAKINGS FROM ACCOMMODATION (\$'000)						
<i>September quarter 1994</i>	61	30	92	13	39	145
<i>1995—</i>						
July	18	13	31	7	14	52
August	17	12	29	4	11	44
September	24	18	42	3	17	62
<i>September quarter 1995</i>	59	42	101	14	42	158

TABLE 13. PASSENGER ARRIVALS AND DEPARTURES, TASMANIA,
INTERSTATE AND INTERNATIONAL (a)(d)
(Source: Tourism, Sport & Recreation)

Period	Arrivals			Total	Departures (b)	Cruise Ships (c)	
	By air		By sea			Arrivals	Departures
	Interstate	International					
1987	526,517	9,446	88,343	624,306	626,297	7,398	6,745
1988	571,344	8,625	101,572	681,541	683,635	5,497	6,161
1989	449,481	8,489	118,646	576,616	591,152	4,149	4,149
1990	555,631	8,629	120,004	684,264	679,833	3,255	3,255
1991	625,366	5,897	131,375	762,638	764,731	6,720	6,663
1992	652,092	4,428	114,969	771,489	761,109	4,608	4,608
1993	694,244	5,144	115,381	814,769	814,835	2,033	2,033
1994	745,508	4,166	128,644	878,318	880,936	6,592	6,592
1993-							
January	71,801	513	15,475	87,789	107,018	150	150
February	60,624	656	12,278	73,558	65,492	697	697
March	57,002	449	13,040	70,491	73,559	586	586
April	62,846	340	12,083	75,269	80,402	-	-
May	45,373	451	5,741	51,565	61,725	-	-
June	51,154	258	6,067	57,479	54,776	-	-
July	45,868	523	4,855	51,246	53,956	-	-
August	45,988	357	4,553	50,898	55,644	-	-
September	62,578	379	9,415	72,372	58,126	-	-
October	57,362	434	7,965	65,761	65,042	-	-
November	59,592	393	8,561	68,546	66,733	-	-
December	74,056	391	15,348	89,795	72,362	600	600
1994-							
January	73,470	473	12,536	86,479	103,610	1,596	1,596
February	63,506	413	12,324	76,243	69,690	2,470	2,470
March	66,848	414	13,054	80,316	85,030	1,064	1,064
April	62,519	502	11,732	74,753	78,095	-	-
May	50,076	242	8,151	58,469	70,924	-	-
June	52,737	167	7,629	60,533	56,244	-	-
July	52,995	186	6,983	60,164	63,737	-	-
August	50,447	250	7,199	57,896	61,996	-	-
September	69,099	340	13,430	82,869	66,659	-	-
October	61,361	422	11,466	73,249	71,846	980	980
November	63,701	338	10,707	74,746	73,918	482	482
December	78,749	419	13,433	92,601	79,187	-	-
1995-							
January	80,818	318	12,430	93,566	115,126	1,368	1,368
February	78,700	269	11,704	90,673	81,727	1,772	1,772
March	68,790	351	13,087	82,228	86,348	659	659
April	66,840	423	9,584	76,847	83,918	-	-
May	53,364	277	8,368	62,009	70,563	-	-
June	57,146	211	7,678	65,035	62,555	-	-

(a) The following persons are not included in these statistics : passengers under three years of age accompanied by an adult ; passengers travelling on chartered flights with minor carriers ; passengers travelling on private or VIP flights.

(b) The proportion of departing passengers who were visitors was shown to be about 58 per cent in the 1981 Tasmanian Visitor Survey, around 55 per cent in the 1984 TVS, about 53 per cent in the 1986 TVS, nearly 60 per cent in the 1988 TVS, close to 65 per cent in the 1990 TVS, almost 58 per cent in the 1991 TVS, almost 55 per cent in the 1992 TVS, just over 58 per cent in the 1993 TVS and almost 60 per cent in the 1994 TVS.

(c) Cruise ship statistics were not collected before November 1986 and are not included in Total Arrivals and Total Departures.

(d) The domestic airline pilots dispute commenced on 18 August 1989 with the pilots working restricted hours (9 a.m to 5 p.m). The pilots were suspended on 23 August 1989.

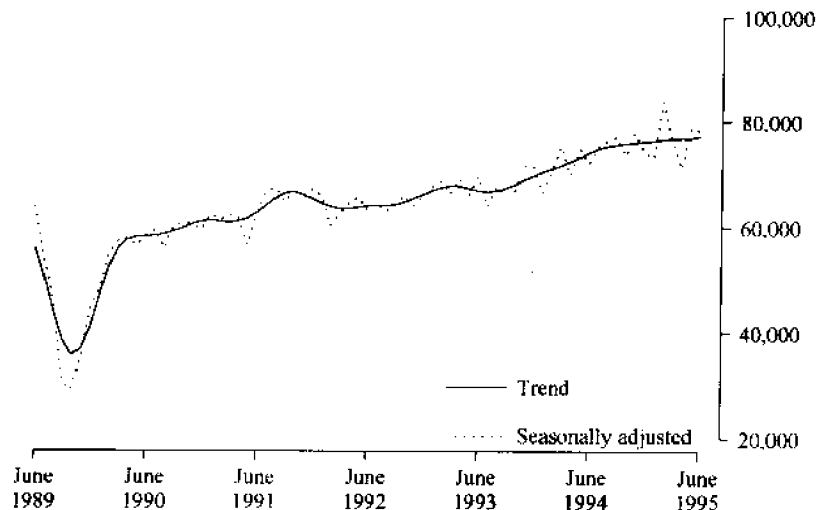
TABLE 14. TOTAL PASSENGER ARRIVALS BY AIR AND SEA INTO TASMANIA :
SEASONALLY ADJUSTED AND TREND SERIES (a)(b)

Period	Original	Seasonally adjusted (a)	Trend
<i>December</i>			
1987	63,187	52,082	53,429
1988	68,809	57,058	56,003
1989	53,613	44,471	41,098
1990	73,421	59,307	60,865
1991	83,162	66,847	65,082
1992	82,262	65,418	65,953
1993	89,795	70,896	69,538
1994	92,601	73,654	75,796
1993-			
January	87,789	67,512	66,831
February	73,558	68,603	67,419
March	70,491	66,232	67,706
April	75,269	69,083	67,698
May	51,565	66,007	67,344
June	57,479	69,623	66,842
July	51,246	63,763	66,656
August	50,898	67,698	66,865
September	72,372	66,406	67,303
October	65,761	66,776	68,004
November	68,546	71,596	68,840
December	89,795	71,295	69,682
1994-			
January	86,479	66,597	70,439
February	76,243	70,738	71,031
March	80,316	75,352	71,636
April	74,753	69,708	72,374
May	58,469	74,763	73,233
June	60,533	72,016	74,142
July	60,164	75,259	74,934
August	57,896	76,522	75,355
September	82,869	77,162	75,601
October	73,249	73,562	75,854
November	74,746	77,860	76,035
December	92,601	74,050	76,229
1995-			
January	93,566	73,207	76,398
February	90,673	83,888	76,616
March	82,228	76,584	76,767
April	76,847	71,159	76,845
May	62,009	78,682	76,906
June	65,035	78,253	77,221

(a) There is an annual recalculation of seasonal adjustment factors to include the most recent year's arrivals. This occurs at the end of each financial year and may cause revisions to previously-published seasonally-adjusted and trend figures, as can be seen in Table 14. A full printout of seasonally-adjusted and trend series figures dating back to 1971 can be obtained through the publication officer for this publication (Eddie Oakford).

(b) The domestic airline dispute commenced on 18 August 1989 with the pilots working restricted hours (9 a.m. to 5 p.m). The pilots were suspended on 23 August 1989.

TOTAL ARRIVALS IN TASMANIA



EXPLANATORY NOTES

INTRODUCTION

1 This publication contains data for Tasmania from a quarterly survey of tourist accommodation establishments.

SCOPE

2 Tourist accommodation establishments currently included in the survey comprise two groups:

- Establishments which provide predominantly short-term accommodation (i.e. for periods of less than 2 months) to the general public. These include:
 - *Hotels, motels and guest houses, with facilities* being hotels licensed to operate a public bar and motels, private hotels and guest houses all of which provide a bath (or shower) and toilet in most guest rooms and have breakfast available for guests. NOTE: From December quarter 1993, hotel, motel and guest house establishments with fewer than five rooms have been formally excluded from the scope of this statistical collection.
 - *Holiday flats, units and houses* (excluding establishments predominantly operated on a time share basis) which are operated by owners, managers or real estate agents who have sole letting rights to at least five flats, units or houses for short-term letting. They are mainly self-contained in terms of cooking, bath (or shower) and toilet facilities and do not have breakfast available for guests. Data for holiday flats, units and houses include short-term owner occupation as well as paying guest occupation.
 - *Visitor hostels* which provide accommodation to visitors on a bed basis (rather than by the room). This category does not include establishments providing charity type accommodation (e.g. Salvation Army hostels) nor hotels, motels and guest houses without in-room facilities which provide accommodation on a per room basis.
- *Caravan parks* which provide either predominantly short-term (i.e. for periods of less than 2 months) or predominantly long-term (i.e. for periods of 2 months or more) accommodation to the general public and which provide powered sites for caravans and toilet, shower and laundry facilities for guests.

3 Data collected and published for each type of establishment (other than holiday flats, units and houses) include both long-term and short-term guests at these establishments.

4 Establishments which provide more than one type of accommodation (e.g. a motel with attached caravan park) are treated as two or more separate establishments. However, self-contained units, flats, cabins, etc. attached to hotels, motels or to caravan parks are included in the capacity for those establishments and not treated as separate holiday flat, unit or house establishments.

AUSTRALIAN STANDARD GEOGRAPHICAL CLASSIFICATION

5 Statistics presented in this publication have been classified according to the Australian Standard Geographic Classification (ASGC), Edition 2.5. This classification incorporates a number of hierarchic structures of geographic areas. The appropriate spatial units of the main structure of the ASGC used in this publication are defined as follows.

EXPLANATORY NOTES

.....

AUSTRALIAN STANDARD
GEOGRAPHICAL CLASSIFICATION
continued

STATISTICAL LOCAL AREAS (SLAs) are legal Local Government Areas or parts thereof, which serve as the smallest type of spatial unit considered appropriate for the presentation of statistics and which add, without gaps or overlaps, to;

STATISTICAL SUBDIVISIONS (SSDs) which in turn represent another, higher hierarchic level and add, without gaps or overlaps, to;

STATISTICAL DIVISIONS (SDs) which in turn add, without gaps or overlaps, to;
Total Tasmania.

For more detailed information, refer to the ASGC (1216.0).

UNPUBLISHED STATISTICS

6 The ABS may make available on request certain unpublished tourist accommodation statistics. A charge may be made for this information.

RELATED PUBLICATIONS

7 Publications for Australia, and each State and Territory, are released by the respective offices of the ABS. Tourist accommodation statistics for past quarters are available on request. Other ABS publications which may be of interest include:

- *Directory of Tourism Statistics* (1130.0) (irregular: first and latest issue; 1991)
- *Overseas Arrivals and Departures, Australia* (3401.0) (monthly)
- *Tourism Indicators, Australia* (8634.0) (quarterly)
- *Tourism Accommodation, Australia* (8635.0) (quarterly)

8 Current publications produced by the ABS are listed in the *Catalogue of Publications and Products* (1101.0). The ABS also issues the *Release Advice* (1105.0) on Tuesdays and Fridays which lists publications to be released in the next few days. Both the Catalogue and *Release Advice* are available from any ABS office.

SYMBOLS AND OTHER USAGES

- n.a. not available
- n.p. not available for publication but included in totals where applicable
- r revised
- .. not applicable
- nil
- break in continuity of the series (where drawn across a column between two consecutive figures)

9 Where figures have been rounded, discrepancies may occur between totals and the sums of the component items.

GLOSSARY

.....

Average length of stay	<p>Average length of stay is expressed in numbers of days and calculated:</p> <ul style="list-style-type: none"> ▪ for hotels, motels and guest houses, by dividing <i>Guest nights</i> by <i>Guest arrivals</i> and ▪ for holiday flats, units and houses, by dividing <i>Unit nights occupied</i> by <i>Unit lettings</i>.
Bed spaces	<p>Three-quarter beds are counted as one bed space; double beds as two bed spaces. Cots are excluded.</p>
Capacity	<p>Capacity in terms of <i>Guest rooms</i>, <i>Bed spaces</i>, <i>Holiday units</i> or <i>Caravan park sites</i>, etc. is the maximum number available to accommodate paying guests during the survey period. Capacity closed temporarily for seasonal reasons is included.</p>
Caravan park capacity	<p>The total number of <i>On-site vans</i>, <i>Other powered sites</i>, <i>Unpowered sites</i> and <i>Cabins</i>, etc.</p>
Employment	<p>The number of persons working at accommodation establishments at the end of the survey period (including working proprietors and those working on other than accommodation activities).</p>
Establishments	<p>For hotels, motels and guest houses, caravan parks and visitor hostels, the number of establishments within the scope of the survey which operated for any part of the survey period, or which closed temporarily for the quarter for seasonal reasons.</p>
Guest arrivals	<p>The total number of paying guests counted only on the first night they stayed at the accommodation establishment.</p>
Letting entities	<p>For holiday flats, units and houses, the number of owners, managers or real estate agents within the scope of the survey who operated for any part of the survey period.</p>
Occupancy	<p>Occupancy in terms of <i>Room nights</i>, <i>Unit nights</i> or <i>Site nights occupied</i> refers to the total number of nights each guest room, holiday unit or caravan park site, etc. was occupied during the survey period. NOTE: From September quarter 1992, caravan park sites, etc. permanently reserved for 2 months or more at the end of the survey period but only casually occupied by their tenants have been recorded continuously as <i>Site nights occupied</i> irrespective of whether the tenants of individual sites were in residence on any particular night.</p> <p>Occupancy in terms of <i>Guest nights</i> refers to the total number of nights each paying guest stayed during the survey period.</p>
Occupancy rates	<p><i>Occupancy rates</i> represent occupancy expressed as a percentage of total capacity available during the survey period, e.g.</p> $\text{Room occupancy rate (\%)} \text{ for the period} = \frac{\text{Room nights occupied}}{(\text{Guest rooms}) \times (\text{No. of days in the period})} \times 100$ <p>providing that, for establishments closing (other than for seasonal reasons) or opening during the survey period, the denominator of the above expression includes only operating periods.</p>

GLOSSARY

.....

Other sites permanently reserved	The total number of powered and unpowered sites, on-site vans and cabins, etc. continuously let for 2 months or more by the end of the survey period to tenants who occupy the sites only on a casual or sporadic basis. Separate data for this item are available only from September quarter 1992.
Room nights available	The number of guest rooms available multiplied by the number of days for which they were available during the survey period. Includes operating periods only for establishments closing (other than for seasonal reasons) or opening during the survey period.
Sites occupied by long-term guests	The total number of sites, etc. occupied at the end of the survey period by guests who have stayed continuously for 2 months or more.
Star grading	The grading of hotels and motels with facilities based on the classification system used by members of the Australian Automobile Association (AAA). The gradings are allocated according to a points system based on the amenities and facilities available to guests. Details of the grading scheme are contained in the RACV-RAASA members' publication <i>Accommodation Australia</i> , or the individual tour guides produced by members of the AAA. For the purpose of classifying establishments to a star grading in this publication, 'half' star gradings are ignored (e.g. a two and a half star grading has been shown as two star).
Takings from accommodation	Revenue received from the provision of accommodation. Takings from meals are excluded. Takings from accommodation for each month generally represent the takings received during that month. Where payments are received in advance of, or after, the provision of accommodation to guests, the monthly figure for takings from accommodation may not necessarily bear a direct relationship to the number of guests accommodated during the month. Rental and storage fees paid to caravan parks for the keeping of private vans in parks are included in the takings of the month they are received.
Unit lettings	The total number of times a holiday flat, unit or house was occupied by a new tenant, counted only on the first night it was occupied by the new tenant.



FOR MORE INFORMATION

The ABS publishes a wide range of information on Australia's economic and social conditions. A catalogue of publications and products is available from any of our offices (see below).

INFORMATION CONSULTANCY SERVICES

Information tailored to special needs of clients can be obtained from the Information Consultancy Service available at ABS Offices (see below).

ABS PRODUCTS

A large number of ABS products is available from the ABS Bookshops (see below). The ABS also provides a subscription service - you can telephone the ABS Subscription Service Australia wide toll free on 1800 0206 08.

ELECTRONIC SERVICES

A large range of data is available via on-line services, diskette, magnetic tape, tape cartridge and CD ROM. For more details about our electronic data services, contact any ABS office (see below) or email us at:

X.400 (C:Australia,PUB:Telememo,O:ABS,FN:STAT,SN:INFO)
Internet Stat.info@abs.telememo.au
Keylink STAT.INFO/ABS

You can visit us on the Internet at: <http://www.statistics.gov.au>

GENERAL SALES AND INQUIRIES

- Sydney 02 268 4611
 - Melbourne 03 9615 7755
 - Brisbane 07 3222 6351
 - Perth 09 360 5140
 - Adelaide 08 237 7100
 - Hobart 002 20 5800
 - Darwin 089 43 2111
 - Canberra 06 252 6627
- Information Services, ABS
PO Box 10, Belconnen ACT 2616



2863560009955

ISSN 0312-6900

RRP \$25.00

© Commonwealth of Australia 1995

Produced by the Australian Government Publishing Service